

May 2018



## NEW ENGLAND CHAPTER NEWSLETTER



### OFFICERS 2017

#### Chair

Lauren Trahan  
Living Proof  
301 Binney St  
Cambridge, MA 02142  
(617) 500-1524  
ltrahan@livingproof.com

#### Chair-Elect

Emily Nichols  
Crabtree & Evelyn  
102 Peake Brook Rd  
Woodstock, CT 06281  
(860) 821-5268  
enichols@crabtree-evelyn.com

#### Secretary

Joy Welsh  
PureHaven Essentials  
1 Carding Lane  
Johnston, RI 02919  
(401) 437-6037

#### Treasurer

Beth McGowan  
69 Brickyard Rd Ext  
Southampton, MA 01073  
(413) 537-1070  
beth.mcgowan6713@gmail.com

#### Advisor

Kathy Rainone  
DeWolf Chemical  
an Azelis Americas Company  
300 Jefferson Blvd.,  
Warwick, RI 02888  
(401) 434-3515  
kranoine@dewolfchem.com

#### Newsletter

Emily Nichols  
Crabtree & Evelyn  
102 Peake Brook Rd  
Woodstock, CT 06281  
(860) 821-5268  
enichols@crabtree-evelyn.com

#### Website

Lauren Trahan  
Living Proof  
301 Binney St  
Cambridge, MA 02142  
(617) 500-1524  
ltrahan@livingproof.com

## DON'T MISS OUT ON OUR NEXT MEETING:

When:  
September 20th 2018

Topic:

### Aerosol Technology

Presented by:  
**Jim Hammer**

Registration begins at 5pm.  
at:  
**Living Proof**  
301 Binney St, Cambridge, MA  
02142

### COST

**STUDENTS— FREE**  
**NESCC MEMBERS - \$50**  
**NON MEMBERS - \$55**

### HOW TO REGISTER:

1. ON our Website: [www.NewEnglandSCC.org](http://www.NewEnglandSCC.org)
2. Call or email Beth - [413] 537-1070  
or [Beth.McGowan6713@gmail.com](mailto:Beth.McGowan6713@gmail.com)

OR

2. Pre-pay by credit card and be automatically registered -  
go to Paypal, [www.PayPal.com](http://www.PayPal.com) and enter email  
of [PaypalPayment@NewEnglandSCC.org](mailto:PaypalPayment@NewEnglandSCC.org)



### AREA I DIRECTORS

Craig Ford  
Health & Beauty Solutions  
an MTI Company  
2870 Forbs Ave  
Hoffman Estates, IL 60192  
(978) 905-1488  
[craig.ford@mineralstech.com](mailto:craig.ford@mineralstech.com)

Kimberly Burch  
Elementis Specialties  
469 Old Trenton Rd  
East Windsor, NJ 08512  
(609) 443-2385



## Table of Contents

### Cover Next Chapter Event

- 1 Chapter Officer & Area 1 Directors info
- 2 Table of Contents
- 3-4 Notes From the Chair
- 7 September 2018 Speaker Information
- 9 2018 Newsletter Sponsorship Rates
- 10 Beeswax: Back To Basics (Part 1)
- 11 Tables from Beeswax Article/  
SCC Membership Info
- 12 Golf Outing 2018 Pictures
- 13 More Pictures/ SCC CEP Course Info
- 14 Oct. 2018 Ed Seminar Information
- 16 SCC Scientific Meeting Info
- 17 NE SCC Events & Other Chapter Events



SOCIETY OF  
COSMETIC  
CHEMISTS

The New England SCC is one of  
18 Chapters of the  
Society of Cosmetic Chemists Chemists  
Across North America

[Click here](#) learn more about the SCC.

**To Become a Member**

**[CLICK HERE](#)**

John A. Shipps  
*President*

**SHIPPS**  
*Incorporated*

**Chemical Consulting**

21 University Road  
Canton, MA 02021-1419

Tel: (781) 821- 2221  
Fax: (781) 821-5717

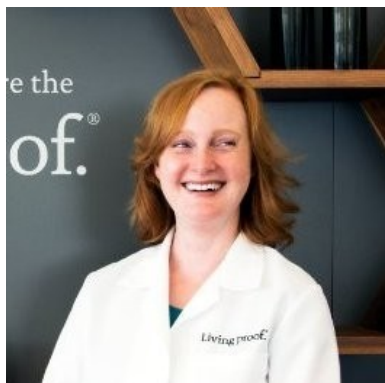
**BRENTAG**  
SPECIALTIES

Connecting **Chemistry**

**ENJOY SUCCESSFUL  
PARTNERSHIPS**

Brenntag Specialties, Inc.  
1000 Coolidge St.  
South Plainfield, NJ 07080  
Phone: 800 843-1935

Fine Ingredients, Minerals, Colors,  
Surface Treatments, Proteins, Powders  
[www.brenntagsspecialties.com](http://www.brenntagsspecialties.com)



## NOTES FROM THE CHAIR

I hope everyone has been enjoying their summer. I want to start by thanking everyone who attended our Fifth Annual Golf Outing. In spite of a few hiccups, it was a great success. Special thanks to Andrew Slesinski and Joy Welsh, both of whom are instrumental in getting the event organized and off the ground. And, thanks to our sponsors, including those who we “cajoled” the morning of the event.

If you attended the Golf Outing and have any feedback for us – good or bad – we’d love to hear from you as we work on planning next year’s outing.

After a brief hiatus, we are pleased to promote this Fall’s upcoming meetings:

Living Proof is hosting our September chapter meeting on September 20th at their Style|lab in Cambridge, MA. If you’ve never been to their offices, this may be your last opportunity before they move to the Seaport District at the end of this year. Jim Hammer from Pharmasol will be on-site to enlighten us on the intricacies of aerosols. Food and drinks will be catered, so please register in advance.

Changing regulations are making it more challenging to find a globally compliant, broad-spectrum preservative system. We’ve chosen the theme of this year’s Educational Seminar to help navigate these challenges. Join us at Assumption College on October 25<sup>th</sup> for our all-day event, titled “Cosmetic Product Preservation: Today’s Challenges for Tomorrow’s Needs.” Our Event Chair, Karl Popp, has an exciting line-up of speakers, including Estee Lauder’s expert microbiologist, Steve Schnittger. See attached bulletin for the agenda.

November’s Chapter Meeting will address another hot topic in the industry – Sustainable Product Development. More and more brands are trying to appeal to millennials, a demographic concerned with climate change and other issues. How does sustainability carry over into product development? Join us for Giorgio Dell’Acqua’s presentation, as well as the installation of new officers, on November 15<sup>th</sup>. Additional information to follow.



## Notes From the Chair Continued

Speaking of new officers, we are looking for a Chair-Elect for 2019. If you are interested in becoming more involved in the chapter, this is a great opportunity. Anyone interested in running for office must submit their name by September 15<sup>th</sup>. Please reach out to any of the existing board members for more information.

This month's newsletter also features part one of a two-part article entitled "Beeswax: Back to Basics", submitted by Belen Lemieux and Steven Puleo. We hope you enjoy it. If you'd like to submit an article for publication, or if there are specific topics you'd like to see in future newsletters or chapter meetings, please let us know. We are always looking for new content. Otherwise, I look forward to seeing everyone in Cambridge on September 20<sup>th</sup>.

Best,

Lauren Trahan

Chairperson

**We Build the Scents that Build Great Brands.**  
www.alphaaromatics.com

**Robert Durand**  
VICE PRESIDENT SALES & MARKETING  
PRIVATE LABEL SALES

COMMONWEALTH SOAP & TOILETRIES  
rdurand@cstsoap.com

537 Quequechan Street  
Fall River, MA 02721

phone 508 676 9355 x111  
direct 774 365 6331  
fax 508 676 9430

**BOTANICAL  
EMOLLIENTS  
& SPECIALTY  
PARTICLES**

24/7 Online  
Ingredient Information:

**iLabel®**  
www.floratech.com/info

**FLORATECH**  
www.floratech.com

*The Natural Solution*

In the New England SCC Region:

Essential Ingredients - Pat Clark | 561.827.8406  
pclark@essentialingredients.com

**ISO 9001**






## High Performance Ingredients for Skin and Hair Care

*Smooth, mild, natural and stable*

From product development to launch, our technical and marketing experts are here to help you meet the demands of consumers worldwide.

[www.charkit.com](http://www.charkit.com) | 203-299-3220



KOSTER KEUNEN

INNOVATION IS OUR TRADITION

WAXES ■ ESTERS ■ EMULSIFIERS  
NATURAL CHEMISTRIES

1021 Echo Lake Road,  
Watertown, Connecticut 06795  
T: 860.945.3333 E: [info@kosterkeunen.com](mailto:info@kosterkeunen.com)  
W: [kosterkeunen.com](http://kosterkeunen.com)

Innovation Comes Naturally



**kinetik**  
[www.kinetiktech.com](http://www.kinetiktech.com)



Ask about our fragrance training series!



**Brie Karafili**  
Technical Sales  
[bkarafili@orchidia.com](mailto:bkarafili@orchidia.com)  
(718) 406-2017  
[www.orchidia.com](http://www.orchidia.com)



Committed to technology, formulation and superior nation-wide distribution.

**Distribution Locations**

- California
- Florida
- Illinois
- Rhode Island
- Texas



**LINCOLN FINE INGREDIENTS** | **MAROON GROUP**

Visit us at: [LincolnFineIngredients.com](http://LincolnFineIngredients.com) or Call: 800.296.4942  
Lincoln Fine Ingredients, Inc. 50 Industrial Circle, Lincoln, R.I., 02865





We provide tailored solutions  
to our customers...

**everyday.**

  
elecorporation.com


Manufacturer of conditioning agents,  
mild surfactants, foam-stabilizers,  
emulsifiers, emollients and more.

**Distributed by Callahan Chemical Company**

HBS is your source for sustained  
release ingredient technologies -  
including Proposition 65 compliant,  
BHA-free retinol products.

MICROSPONGE® C116A Retinol  
Poly-Pore® 120RE Retinol  
HBS Retinol C50 (50% Active)  
Poly-Pore® 404HA Hyaluronic Acid

Microsponge® N  All-Natural  
Microparticle Delivery System

MICROSPONGE® N 709RE Retinol  
MICROSPONGE® N 725GA Glycolic Acid  
MICROSPONGE® N 733SA Salicylic Acid  
MICROSPONGE® N 740TT Tea Tree Oil  
MICROSPONGE® N 740SB Shea Butter

[www.healthbeautysolutions.com](http://www.healthbeautysolutions.com)  
[hpcinfo@mineralstech.com](mailto:hpcinfo@mineralstech.com)  
(337) 354-1044

 **INNOSPEC Provides**

- Silicones
- Specialty surfactants
- Benzoate esters
- Guars
- Conditioning agents
- Dispersants

**Contact us today:**  
**888-633-8028**

  
Touching Everyday Lives

**Distributing  
ingredients  
from the finest  
manufacturers**

[www.essentialingredients.com](http://www.essentialingredients.com)

## September 20th Speaker Information

### Jim Hammer



Jim Hammer's career began in 1987 after graduating from Eastern Nazarene College (Quincy, MA), with degrees in Chemistry and Education. Employed by Shuster Laboratories, Jim worked in both the analytical chemistry laboratory, and the consumer product development laboratory. Quickly becoming very interested in formulation and cosmetic chemistry, under the direction of Dr. Bernie Siegal (Bristol-Myers, Gillette) and several MIT scientists, Jim advanced to positions of increasing management responsibility within the company. He remained with Shuster until 2006, when he joined Pharmasol Corporation as the Director of Research & Development. Just prior to joining Pharmasol, Jim founded Mix Solution.

Over the years, Jim has created many new and innovative consumer products, including health and beauty aids, cosmetics, pharmaceuticals, dietary and sports supplements, household cleaners and detergents, chemical specialty products, and foods.

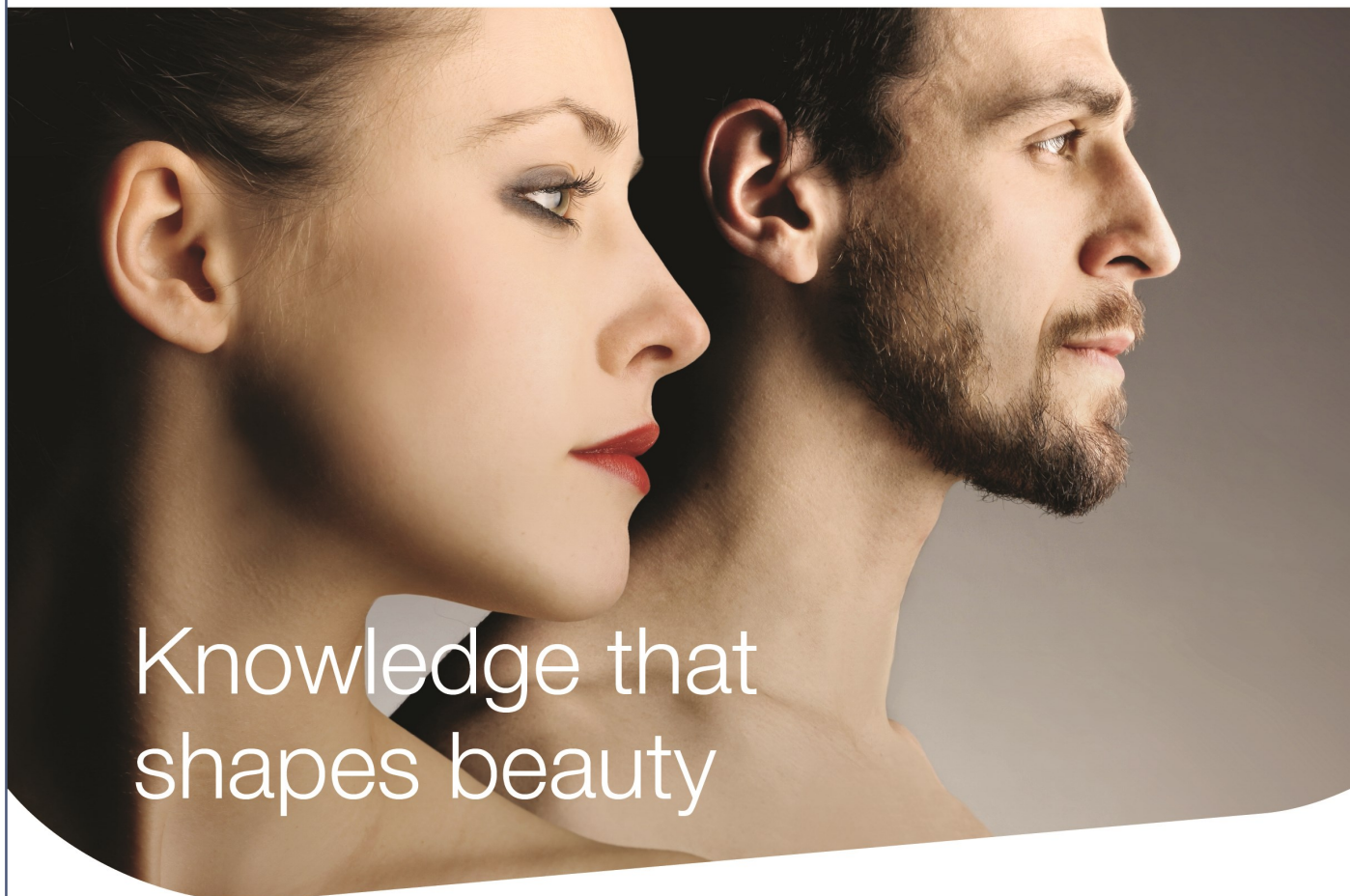
A member of the Society of Cosmetic Chemists, Jim is a recognized industry expert, and frequent contributor to magazine, newspaper and website articles, including "Allure", "Health", "Cosmopolitan", "Shop, Etc.", "The New York Times", "InStyle" and many others. A quick internet search for "Cosmetic Chemist Jim Hammer" will reveal just a few of his many contributions to the beauty industry.

In partnership with local haircare company, Living Proof, we are pleased to host Jim Hammer on September 20th as he enlightens us on aerosol technology.





# DeWolf



## Knowledge that shapes beauty

### **Building the expert foundation that true beauty depends on**

DeWolf, an Azelis Americas company, shares your passion for transforming beauty through profound technical and market expertise. Combining forces between DeWolf and Azelis to offer you more added-value is our promise to create a unique synergy for you, but also with you; and this is the beauty of it all.

[www.dewolfchem.com](http://www.dewolfchem.com)  
[www.azelisamericas.com](http://www.azelisamericas.com)

Creating value, growing together





## New England SCC Announces Sponsorship Rates for 2018

For sponsorship in the New England SCC Newsletter, select the dimensions of your graphic. Dimensions listed can be oriented either horizontally or vertically.

Ad size (height x width)	Cost*	Select
2 inches x 2 inches	\$200	<input type="checkbox"/>
2 inches x 3 inches	\$300	<input type="checkbox"/>
2 inches x 3.5 inches (business card)	\$300	<input type="checkbox"/>
2 inches x 4 inches	\$300	<input type="checkbox"/>
3 inches x 4 inches	\$400	<input type="checkbox"/>
4 inches x 4 inches	\$500	<input type="checkbox"/>

\*Cost is for one year's insertions, up to six issues in a calendar year (Jan – Dec). The most current newsletter will also be continuously available on our chapter website: [www.newenglandsc.org](http://www.newenglandsc.org)

Please e-mail either black and white or color camera-ready copy or a "tif" or "jpg" file that complies exactly with the ad space dimensions selected to Emily Nichols: mailto: [enichols@crabtree-evelyn.com](mailto:enichols@crabtree-evelyn.com) Graphics outside of the stated dimensions will be re-sized by the graphic artist, however there may be an unacceptable loss of clarity in some instances.

Payment may also be made directly by check to our treasurer, Beth McGowan as follows:

*Beth McGowan, Treasurer  
New England Society of Cosmetic Chemists  
69 Brickyard Rd Ext  
Southampton, MA 01073*

Beth's Phone and email: 413.537.1070 [Beth.McGowan6713@gmail.com](mailto:Beth.McGowan6713@gmail.com)

If you have any questions please contact Emily Nichols at (860) 821-5268 or the email address above.

## Beeswax: Back to Basics (Part 1)

Belén M. Lemieux, Steven L. Puleo – Koster Keunen, Inc., USA.

Beeswax is one of the oldest cosmetic ingredients in the world. It was first put to use by the ancient people of China and Egypt. Egyptians used it in cosmetics and in hair preparations to hold curls and braids in place. Other documented historical uses include preservation of papyrus scrolls and, later, candle making, specifically for religious ceremonies.

Today, beeswax is still widely used in cosmetics, especially in color cosmetics and lip balms. In 2017, 7% of new product launches in the eye color, lip color and lip care categories contained beeswax or a beeswax derivative.

### A Unique Chemistry

The definition of a wax is fairly broad. They are generally classified according to their origin, allowing the chemical composition to be narrowed down within each category. Natural waxes, such as beeswax, are complex mixtures of organic compounds, mainly esters of long chain alcohols and acids.

Beeswax is produced by honey bees of the genus *Apis*. Once secreted, it is then modified by the bee into the wax which will be used to build the honey comb, with the main purposes of honey and pollen storage and brood protection.

The overall process is quite complex and beyond the scope of this article. In short, European honey bees (*Apis Mellifera*) metabolize the monosaccharides (found in their food sources) into the lipid components that constitute virgin beeswax. This wax is secreted on the thorax and abdomen of the bee to form cuticular wax (produced by the epidermal cells) and scale wax (produced by abdominal glands) and is initially richer in hydrocarbons.

The minor components of beeswax, called propolis or “bee glue”, are not secreted by the bee but are collected by it from surrounding trees, shrubs, and flowers. Propolis consists of a highly complex mixture of mostly resins, oils, pollen, and flavonoids, which give beeswax some of its pliability and yellow color.

Newly secreted cuticular and scale wax, along with propolis are all manipulated and chewed by the bee, where they are chemically modified by salivary enzymes, rendering the mix ready for use as comb wax, which now has a different chemical composition richer in monoesters. The major components, obtained via capillary gas chromatography, are listed in Table 1. The physical and chemical properties of beeswax are listed in Table 2.

Beeswax is a remarkable cosmetic ingredient. It thickens and structures oils by forming stable gel networks where gel viscosity and hardness are proportional to the percent of beeswax. The gel also depends on the oil/wax compatibility, as is shown in Figure 1. In realistic terms, by manipulating very few variables, cosmetic products will range from waxy hard sticks to soft sticky balms. The uniqueness of beeswax lies in its dual functionality as a structuring agent (due to the monoesters, hydrocarbons and fatty acids) and a plasticizer (due to the di- and complex esters), which is important for stick integrity, smooth textures, and even color deposition. The plasticizing properties in beeswax will also help prevent crystallization, “sweating”, and bloom. This double functionality also simplifies the formulation process.

Beeswax also has widespread use as a thickener in emulsion formulas (both oil-in-water and water-in-oil), especially where a thick consistency is desired, such as butters or creams. Because of its free fatty acids, beeswax has the ability to form *in situ* soaps when heated with a base, therefore doubling as an emulsifier as well as a thickener. This is the basis of traditional cold creams, which have been in use since 400 AD.

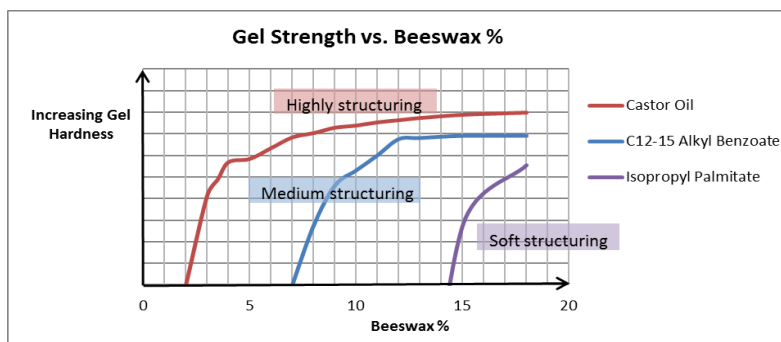


Figure 1. Gel strength and hardness as a function of % beeswax and oil medium.

### References

1. Puleo, S. and Rit, T.P., 1992, Natural Waxes: Past, Present and Future, *Lipid Technology*, 4, p. 82-90.
2. Data gathered from Mintel GNPD, <http://www.gnpd.com/sinatra/gnpd/search/> (December 20, 2017).
3. Puleo, S. and Rit, T.P., 1992, Natural Waxes: Past, Present and Future, *Lipid Technology*, 4, p. 82-90.
4. Coggeshall, W.L. and Morse, R.A., 1984, *Beeswax Production, Harvesting, Processing and Products*, Wicwas Press, Ithaca, NY, p. 30-40.
5. Hepburn, H. R., 1986, *Honeybees and Wax*, Springer-Verlag Berlin Heidelberg, Germany, p. 44-55.
6. Puleo, S.L., 1991, Beeswax Minor Components: a New Approach, *Cosm. Toiletr.*, 106(2), p. 83-89.
7. Koster Keunen, Inc., 2014, *NF Beeswax Technical Data Sheet*, Koster Keunen, Inc. Watertown, CT.
8. Puleo, S.L., 1991, Beeswax Minor Components: a New Approach, *Cosm. Toiletr.*, 106(2), p. 83-89.
9. Koster Keunen, Inc., 2014, *NF Beeswax Technical Data Sheet*, Koster Keunen, Inc. Watertown, CT.
10. Puleo, S. and Rit, T.P., 1992, Natural Waxes: Past, Present and Future, *Lipid Technology*, 4, p. 82-90.
11. Rit, T. P., proprietary data (unpublished).
12. Lochhead, R. Y., 2007, The Use of Polymers in Emulsions, *J. Cosmet. Sci.*, 58, p. 578.



Chemical Composition of Beeswax	
<b>Monoesters</b>	45 to 55%*
<b>Hydrocarbons</b>	15 to 18%
<b>Free Fatty Acids</b>	10 to 15%
<b>Di and Complex Esters</b>	8 to 12%
<b>Hydroxy Monoesters</b>	4 to 6%
<b>Free Fatty Alcohols</b>	1 to 2%
<b>Minor Components</b>	2 to 5%

Table 1 : Chemical composition of beeswax

Physical and Chemical Properties of Beeswax	
<b>Melting Point</b>	62 – 65 °C*
<b>Cloud Point</b>	< 65 °C
<b>Flash Point</b>	242 – 250 °C
<b>Specific Gravity</b>	0.95 - 0.96
<b>Iodine Value</b>	8 – 11
<b>Saponification Value</b>	89 – 103
<b>Acid Value</b>	17 – 24
<b>Ester Value</b>	72 – 79
<b>Unsaponifiabiles</b>	45 – 55 %

Table 2: Physical and chemical properties of beeswax

\*Variation within the range depends on many factors, including geographical region, climate, and bee subspecies.



SOCIETY OF  
COSMETIC  
CHEMISTS

JOIN COSMETIC AND PERSONAL CARE PROFESSIONALS FROM 37 COUNTRIES THAT RELY ON THE SCC, THE OLDEST AND LARGEST NON-PROFIT ORGANIZATION FOCUSED ON ADVANCING COSMETIC SCIENCE EDUCATION

**5,000**  
MEMBERS  
CAN'T BE WRONG!

### MEMBER BENEFITS

- Subscription to the **Journal of Cosmetic Science**, our flagship publication, published six times per year
- Discounts on **Continuing Education** courses, which further improve the qualifications of cosmetic scientists by setting high ethical, professional and educational standards
- Discounted registration to the **SCC Annual Meeting**
- Opportunities to participate in a range of professional and social events at **19 affiliated Chapters**
- Full online access to the searchable digital library of every issue of the Journal
- AND MORE!

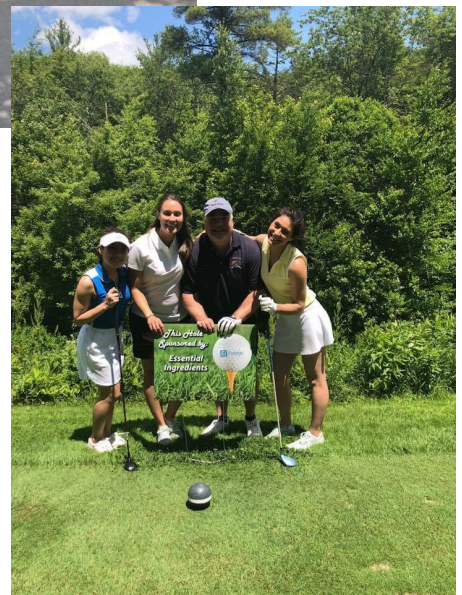
[www.sconline.org/membership](http://www.sconline.org/membership)







## Pictures from our 2018 Annual Golf Outing







SOCIETY OF  
COSMETIC  
CHEMISTS

*Dedicated to the advancement of cosmetic science*

## ATTENTION! ATTENTION!

### In-House CEP Courses Available

In-House Courses are highly-personalized courses brought to companies to address challenges or areas of need. These courses, taught by knowledge experts, provide professionals with an up-to-date cosmetic science education. Recent In-House Courses have been organized for **Benefit Cosmetics, Mary Kay, Bayer, the FDA** and others.

Companies interested in providing in-depth technical information to their employees can contract an education day in a location of their choosing.

- ▶ **SOCIETY** covers the costs of booking the instructor and all of the instructor's traveling expenses (including hotel, flight, car, etc.)
- ▶ **COURSES** can be scheduled for 1 or 2 days on any topic of particular interest to the company
- ▶ **COMPANIES** can choose the instructor if they seek a specific knowledge expert

#### Current courses available include:

Scale Up & Processing	Botanicals & Naturals for The Naturals Market	Preservatives
Regulatory	Chemistry & Regulations of Cosmetic Colorants	Cosmetic Rheology
Color	Molecular Biology & Gene Expression	Color & Make-Up
GMPS For Cosmetics	Phytochemistry 101 For Cosmetic Chemists	Surfactants
Cosmetic Formulations	cGMPS For Cosmetics and Otc's	Cosmetic Raw Materials
Regulatory Update	Practical Basic & Theory in Emulsion Technology	Fragrance as A Science
Beginning Cosmetic Chemistry	Cosmetic Chemists Guide to Product Development	Silicone Chemistry
Basic Hair Science	Sustainable Cosmetic Product Development	and more!

To reserve a course for your team,  
contact Sam Neely at [sneely@scconline.org](mailto:sneely@scconline.org)

## October 25th Ed Seminar

# Cosmetic Product Preservation: Today's Challenges for Tomorrow's Needs

The New England Chapter of the Society of Cosmetic Chemists is excited to announce that registration is open for their Annual Educational Seminar at Assumption College in Worcester, MA on October 25, 2018.

### TOPICS & SPEAKERS:

Global Trends and Challenges in Product Preservation  
Steve Schnittger, Estee Lauder

Benefits of Preservative Blends  
Joe Mayo, Lincoln Fine Ingredients

Natural Preservative Options  
Dr. Judy Zhaung, Inolex

Formulating to Improve Preservation Success  
Dr. Patrick Crowley, Callum Consultancy

Bacteria Derivatives as Antimicrobial Preservatives  
Tia Alkazaz, Active Micro Technologies

**LOCATION:** Assumption College  
500 Salisbury Street  
Worcester, MA 01609  
Hagan Hall

**TIME:** 9AM – 4:30PM

For registration, contact Beth McGowan, [beth.mcgowan6713@gmail.com](mailto:beth.mcgowan6713@gmail.com)

Registration Fee (including lunch and tabletop exhibits): \$75 for members  
\$100 for non-members

Pre-pay by credit card and you will be automatically registered!

Go to PayPal ([www.PayPal.com](http://www.PayPal.com)) and enter email of [PaypayPayment@NewEnglandSCC.org](mailto:PaypayPayment@NewEnglandSCC.org)

**OR**

Go to [www.newenglandsc.org/meeting-registration](http://www.newenglandsc.org/meeting-registration)

Table Top Exhibit Space: \$200. Space is limited. Please register early





Open  
your  
eyes.

### Suga®Nate 160NC

*Sodium Laurylglucosides Hydroxypropylsulfonate*

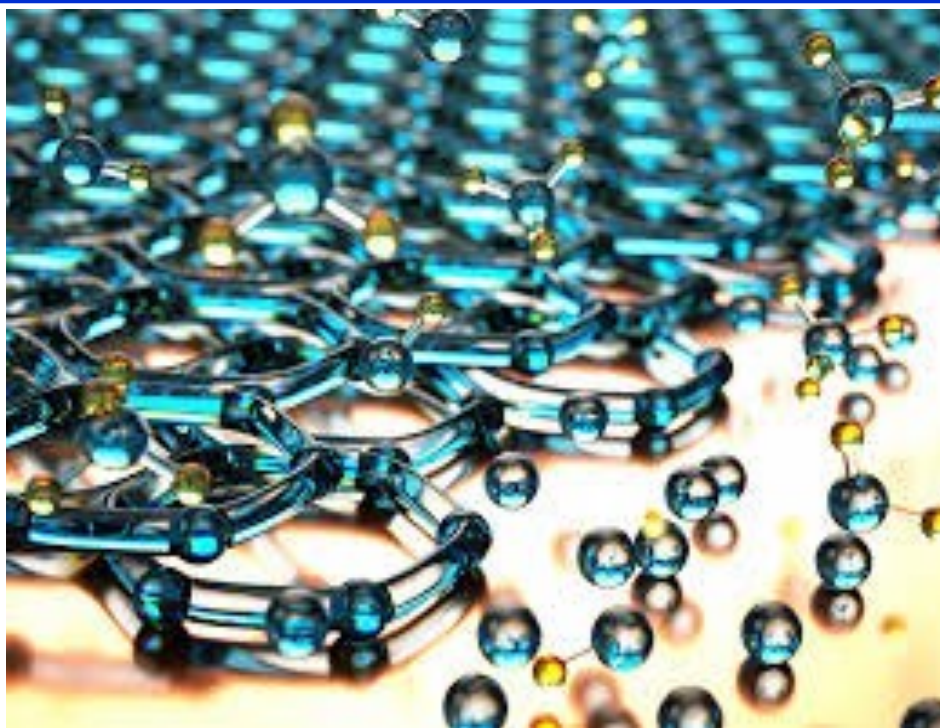
- **Lowest\*** eye irritation score
- 100% naturally-derived
- EO-free, palm-free, biodegradable
- High-foaming
- Ships without preservatives



**Colonial  
Chemical**

Visit [www.colonialchem.com](http://www.colonialchem.com)

\*Results for both HET-CAM and Mattek EpiOcular™ are **Zero**, indicating no ocular irritation potential in vivo. Complete testing information available upon request.  
Suga® is a registered trademark of Colonial Chemical Inc. EpiOcular™ is a trademark of Mattek Corporation. © 2017 Colonial Chemical Inc.



Have you written an interesting article about your field? Want to be a published author? Send us your work for the opportunity to be published in this newsletter!

Contact Emily Nichols [enichols@crabtree-evelyn.com](mailto:enichols@crabtree-evelyn.com)



**Our Annual Scientific Meeting is where the world connects for the best cosmetic science education!**

We are delighted to announce that registration is open for the **72nd Annual Scientific Meeting & Technology Showcase** at the Sheraton New York Times Square Hotel on Dec. 11-12, 2018!

**FEATURING 2 FULL DAYS OF:**

- **ADVANCED** Education – cutting edge science, technologies, and product innovations for industry veterans
- **BASIC/NEXTGEN** Education – fundamentals & basics for students and early careerists
- **Networking & Social Events** – connecting you with the “Who’s Who” in the industry
- **Technology Showcase** – engaging you with researchers and companies showcasing the latest in industry technology
- **Plus:** pre-conference full-day CEP courses on Monday, December 10th

 <b>SCC ATTENDEE REGISTRATION</b>				
	Early Bird until May 31	June 1 until October 31	November 1 until November 30	December 1 until ONSITE
<b>FULL Registration</b> (SCC Members)	\$650	\$675	\$750	\$875
<b>FULL Registration</b> (Non-Members)	\$790	\$815	\$890	\$1015
<b>FULL Registration</b> (SCC Student Members)	\$250	\$250	\$250	\$250
<b>Split Registration</b> (SCC Members ONLY)	\$800	\$850	\$900	No splits available
<b>One Day Registration</b> (SCC Members)	\$550	\$575	\$650	\$775
<b>One Day Registration</b> (Non-Members)	\$690	\$715	\$790	\$915
<b>Cocktail Ticket</b> (Members & Non-Members)	\$150	\$150	\$150	\$300
<b>Technology Showcase</b> (SCC Members)	Free	Free	\$25	\$50
<b>Technology Showcase</b> (Non-Members)	\$25	\$25	\$50	\$100





### **NEW ENGLAND SCC MEETINGS AND EVENTS**

**20 Sep 18** — NE SCC Monthly Meeting — Living Proof, Cambridge, MA

Speaker: Jim Hammer on Aerosol Technology

**25 Oct 18** — NE SCC Educational Seminar — Assumption College, Worcester  
MA — Cosmetic Product Preservation

**15 Nov 18** — NE SCC Monthly Meeting & Installation of 2019 Officers

Speaker: Giorgio Dell'Acqua on Sustainable Product  
Development

### **OTHER AREA 1 CHAPTER EVENTS**

5 Sep 18—LISCC Golf Outing

12 Sep 18—NYSCC Meeting- Extending Your  
Invisible Umbrella

20 Sep 18—NY SCC Culinary Event

24 Sep 18—CT SCC's 10th Annual Golf Outing

25 Sep 18— CT SCC Dinner Meeting- Chocolate  
& Skin

25 Sep 18 — QC SCCC Education Day– Skin  
Microbiome

16 Oct 18— CT SCC Scientific Seminar

23 Oct 18—NYSCC Meeting- Active Ingredients

23 Oct 18—QC SCC Suppliers Day

07 Nov 18—NYSCC Meeting– Skin Barrier

13 Nov 18— CT SCC Dinner Meeting

27 Nov 18—QC SCC Holiday Meeting

11-12 Dec. 18—SCC 72nd Annual Meeting &  
Technology Showcase



## ABOUT OUR ORGANIZATION



Dedicated to the advancement of cosmetic science, the Society strives to increase and disseminate scientific information through meetings and publications. By promoting research in cosmetic science and industry, and by setting high ethical, professional and educational standards, we reach our goal of improving the qualifications of cosmetic scientists. Our mission is to further the interests and recognition of cosmetic scientists while maintaining the confidence of the public in the cosmetic and toiletries industry.

---

[www.newenglandsc.org](http://www.newenglandsc.org)

---

WANT TO SPONSOR THIS NEWSLETTER? CONTACT  
EMILY NICHOLS, EDITOR, AT  
[ENICHOLS@CRABTREE-EVELYN.COM](mailto:ENICHOLS@CRABTREE-EVELYN.COM)  
FOR RATES AND OTHER INFORMATION



Society of Cosmetic Chemists – New England Chapter, Inc.  
163 Shears Street  
Wrentham, MA 02093