

Beauty is colorful. We are the color experts.

Cosmetics, Color Materials

January, 2023



Natural Colorant & Natural Mica Colors

January 2023



Mindful Beauty

Sustainability is multifaceted. MINDFUL BEAUTY strikes an ideal balance between responsibility and naturality, highlighting conscious color and purposeful products designed for today's beauty needs.

Explore a curated selection of cosmetic colors and beauty ingredients that go beyond natural to encompass:

- Mineral and plant derived raw materials
- Ethical and responsible sourcing
- Traceable supply chains
- COSMOS certifiable products



A Growing Portfolio of Conscious Color and Purposeful Products



100% USA Mica Effect Pigments

Sustainably and ethically sourced natural mica from our wholly owned mine in Hartwell, GA, USA



High Purity Iron Oxides

Iron Oxides are high purity; created with upcycled feedstocks and low heavy metal profile



Natural Wax Dispersions

Unique dry powder dispersions easing transport, usage, formulation, storage, and more



Active Antioxidants

Rich antioxidants derived from Spirulina algae



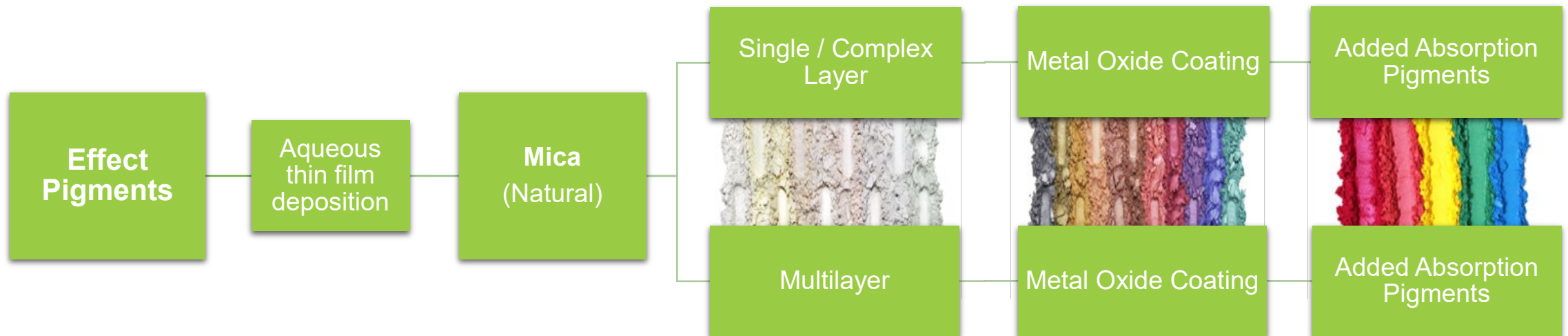
NEW! Natural Colors & Functional Ingredients

Responsibly sourced plant derived ingredients and colorants that improve the naturality and function of beauty formulas

Increasing Transparency in Sustainable Color



- Hartwell, GA is a natural mica mine and processing facility owned and operated by Sun Chemical. This site is regulated and audited by the Mining Safety & Health Association (MSHA), US Federal Government
- Effect pigments coated on natural mica, offering full transparency and traceability of mica, ethical sourcing, sustainable practices, and zero child labor.



Increasing Transparency in Sustainable Color

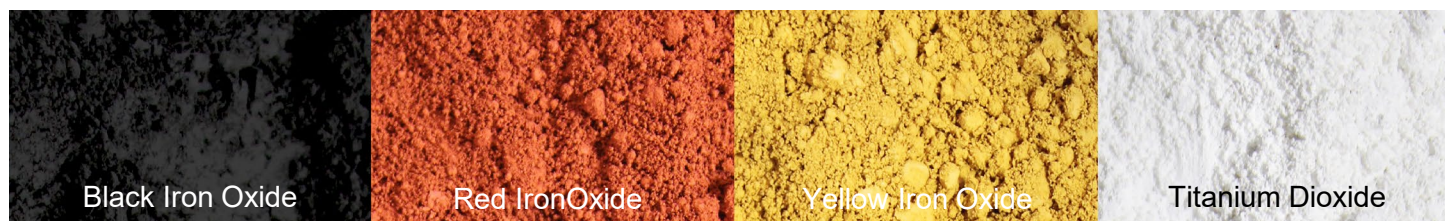


- Our highest quality and purity selection of inorganic pigments.
- Lowest heavy metal profile in the industry, far below European standard, E172 and FDA

| Chemical Purity Specifications | | | | | | | | | | | | |
|--------------------------------|-------|-------|--------|-------|--------|-------|--------|---------|---------|---------|--------|--------|
| | Hg | As | Pb | Cd | Ba | Sb | Cu | Cr | Ni | Zn | Se | Co |
| FDA (TiO ₂) | 1 ppm | 1 ppm | 10 ppm | | | | | | | | | |
| FDA (Iron Oxides) | 3 ppm | 3 ppm | 10 ppm | | | | | | | | | |
| E171 | 1 ppm | 1 ppm | 10 ppm | 1 ppm | | 2 ppm | | | | | | |
| E172 | 1 ppm | 3 ppm | 10 ppm | 1 ppm | | | 50 ppm | 100 ppm | 200 ppm | 100 ppm | | |
| SunPURO TiO ₂ | 1 ppm | 1 ppm | 5 ppm | 1 ppm | 30 ppm | 1 ppm | 5 ppm | 10 ppm | 5 ppm | 10 ppm | 1 ppm | 5 ppm |
| SunPURO Iron Oxides | 1 ppm | 3 ppm | 3 ppm | 1 ppm | 5 ppm | 5 ppm | 10 ppm | 25 ppm | 10 ppm | 35 ppm | 10 ppm | 30 ppm |

- Exhibit excellent stability in cosmetic formulations
- Green story: the iron oxides are produced in Valpariso, IN, USA and use a unique process upcycling Ferrous Chloride and scrap metal, reducing landfill waste and hazardous waste disposal
- COSMOS approved, HALAL approved, Kosher certified, globally compliant, Vegan

1 KG
of High Purity Iron Oxide
upcycles
6.7 KG
of hazardous waste



Increasing Transparency in Sustainable Color



- 100% natural vegetable derived carrier composed of a combination of Hydrogenated Rapeseed Oil and Heptyl Undecylenate, an optimal combination that has luxurious skin feel and aids in maintaining moisture of the skin
- It offers unique dry powder-like dispersion aids in easy and efficient shipping, usage, and storage
- Less mess with low dusting
- Accelerate formulation and manufacturing processes
- COSMOS Approved
- Palm, GMO, and preservative free, ideal for vegan and HALAL beauty products
- Creates desired matte effects, mix with effect pigments to elevate with dimension

Lipstick – Natural Rosewood

CC-FR-18-054-B63

A richly pigmented lipstick with a creamy color and texture that looks as good as it feels, infused with moisturizing shea butter.

FEATURED PRODUCTS

NWD-7336 Red Iron Oxide Natural Wax Dispersion

a unique dry powder dispersion of SunPURO[®], high purity iron oxides, dispersed in a combination of 100% vegetable derived oils for more efficient formulation and manufacturing

Bi-Lite[®] 20

optically neutral performance mineral based on 100% USA mica and bismuth oxychloride

Cloisonné[®] Sparkle Rouge 450J

a vegan rouge metallic-like effect pigment based on 100% USA mica creating a shimmering finish



Lipstick – Natural Rosewood

CC-FR-18-054-B63

| Phase | Ingredients | INCI | % by weight | Function | Suppliers |
|-------|---|---|-------------|-------------------|--------------------|
| A | Candelilla Wax SP-75G | Candelilla wax | 9.50 | Consistency agent | Strahl and Pitsch |
| | Carnauba Wax SP-63 | Copernicia Cerifera (Carnauba) Wax | 4.50 | Consistency agent | Strahl and Pitsch |
| | Makigreen Velvet Wax PF | Rhus Succedanea Fruit Wax, Helianthus Annuus (Sunflower) Seed Wax, Oryza Sativa (Rice) Bran Oil, Oryza Sativa (Rice) Bran Wax, Vegetable (Olus) Oil | 11.00 | Consistency agent | Daito Kasei |
| | Cetiol® SB 45 | Butyrospermum Parkii (Shea) Butter | 11.00 | Consistency agent | BASF |
| | Cetiol® J600 | Dicaprylyl Carbonate | 16.20 | Emollient | BASF |
| | Myritol® 331 | Cocoglycerides | 10.00 | Emollient | BASF |
| | Lameform® TGI | Polyglyceryl-3 Diiostearate | 7.00 | Emollient | BASF |
| B | Eutanol® G | Octyldodecanol | 7.00 | Emollient | BASF |
| | NWD-7336 Red Iron Oxide Natural Wax Dispersion | Iron Oxides (CI 77491), Hydrogenated Rapeseed Oil/Heptyl Undecylenate | 2.00 | Pigment | Sun Chemical |
| | NWD-9336 Yellow Iron Oxide Natural Wax Dispersion | Iron Oxides (CI 77492), Hydrogenated Rapeseed Oil/Heptyl Undecylenate | 1.30 | Pigment | Sun Chemical |
| C | Bi-Lite® 20 | Mica, Bismuth Oxychloride (CI 77163) | 10.70 | Effect Pigment | Sun Chemical |
| | Cloisonné® Sparkle Rouge 450J | Mica, Iron Oxides (CI 77491) | 7.00 | Effect Pigment | Sun Chemical |
| D | Perfume | | qs | Fragrance | |
| | Irwinol™ LS 9890 | Octyldodecanol (and) Irvingia Gabonensis Kernel Butter (and) Hydrogenated Coco-Glycerides | 1.00 | Active ingredient | BASF |
| | Covi-ox® T90 EU C | Tocopherol | 1.00 | Antioxydant | Kensing (One Rock) |

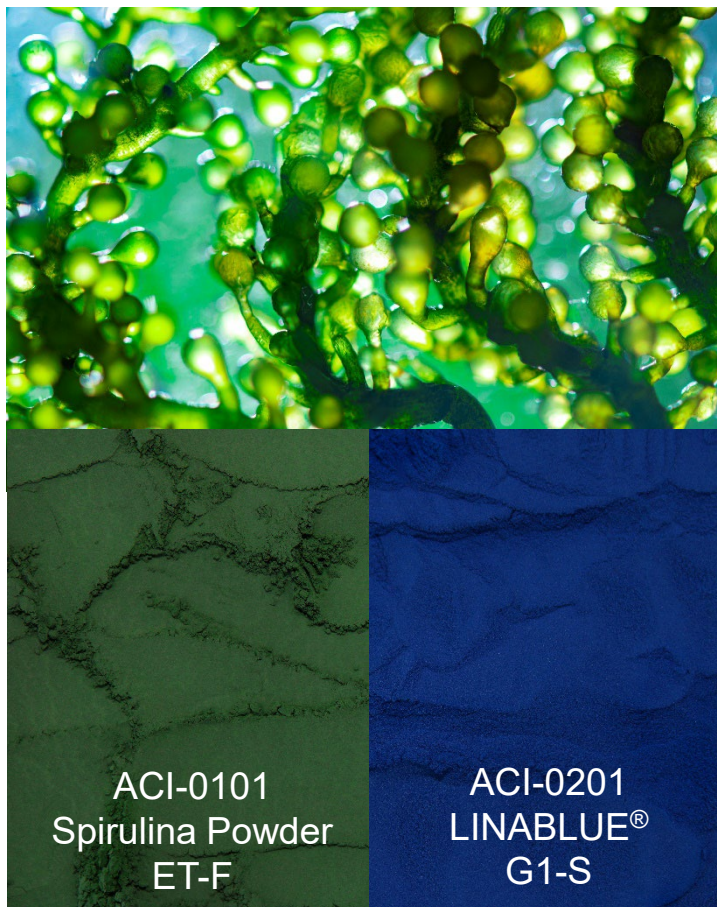
Procedure:

1. Prepare Phase A and heat to 80°C while stirring
2. Grind Phase B with the tricylinder device
3. When it's homogeneous, add Phase B to Phase A
4. Add Phase C and D to Phase A
5. Pour in a mold at 75°C

Plant Derived Ingredients: Active Ingredient from Spirulina Algae

Spirulina (Arthrospira) Platensis

- A natural antioxidant derived from Spirulina Algae
- Heat sterilized blue-green powder
- Particle size: 20µm
- Water dispersible
- Recommended usage: 0.1% to 1%
- Raw material origin: USA
- ISO16128-2: 100% natural content
- Vegan and COSMOS APPROVED
- China and REACH compliant
- Toxicological data: HRIPT available
- ABS Statement



Spirulina Platensis Extract (and) Trehalose (and) Sodium Citrate

- A natural phycocyanin
- Antioxidant activity: Inhibits the generation of lipid peroxidation
- Water soluble powder
- Stable within pH range of 4.5-8
- Recommended usage: 0.1% to 1%
- ISO16128-2 : 40% natural content, 100% natural origin content
- Vegan and COSMOS APPROVED
- Halal certified, China and REACH compliant



COSMOS
APPROVED

Deep Nourishing Hair Butter – Ocean Blue

HB-BE-22-14518-01

A luxurious butter nourishes hair with natural ingredients to help repair damage and leave a silky shine. Ideal for dry and damaged hair.

FEATURED PRODUCTS

ACI-0201 LINABLUE® G1-S

a natural antioxidant derived from Spirulina algae

Reflecks™ MultiDimensions Glistening Gold G280D

a COSMOS approved sparkling color travel effect pigment based on borosilicate enhances shelf appeal and consumer experience



Deep Nourishing Hair Butter – Ocean Blue

HB-BE-22-14518-01

| Phase | Ingredients | INCI | Weight % | Function | Supplier |
|-------|---|---|----------|-------------------------------|-----------------|
| A | Premium Organic Olive Butter | Olea Europaea (Olive) Fruit Oil, Hydrogenated Olive Oil | 68.50 | Emollient | Naturochim |
| | Refined Coconut Oil | Cocos Nucifera (Coconut) Oil | 25.00 | Emollient | Sophim |
| | Castor Oil | Ricinus Communis (Castor Oil) Seed Oil | 2.50 | Emollient | |
| B | Floviva Lavender Oil | Lavandula Angustifolia (Lavender) Oil | 1.00 | Fragrance & Active ingredient | Protec Botanica |
| | ACI-0201 LINABLUE® G1-S | Spirulina Platensis extract, Trehalose, Sodium Citrate | 1.00 | Active Ingredient | Sun Chemical |
| | Reflecks™ MultiDimensions Glistening Gold G280D | Calcium Sodium Borosilicate, Titanium Dioxide (CI77891), Silica | 2.50 | Effect Pigment | Sun Chemical |

Procedure:

1. Heat Phase A until totally melted.
2. Add Phase B, mix well and pour

NEW! Plant Derived Colors and Ingredients for Beauty

Annatto



Chlorophyll



Coconut



Natural | Plant Derived | Responsibly Sourced | COSMOS certifiable

Natural Annatto Products



About Annatto

Annatto seeds are the fruit of the annatto tree. The trees are productive for ~ 15-years

Annatto seeds are high in tocotrienol, a form of vitamin E

Rich in antioxidants, known for helping to protect skin cells



Family Farm

Annatto seeds are farmed in the region of San Paulo, Brazil by a multi-generational family-owned farm.



Country of Origin: Brazil

No Waste

Annatto husks and biomass are recycled as fertilizer and animal feed.



Natural Annatto



INCI

Helianthus Annuus (Sunflower) Seed Oil (and) Annatto (CI 75120)

Extraction

Bixin powder is obtained using vegetable oil and is dispersed in sunflower oil, Bixin content minimum 8%

Regulatory

Globally approved as a cosmetic colorant

Stability

Stable in all tested conditions

COSMOS

Certifiable ingredient

ISO 16128-2

Natural Origin

100%

Product Form

Red paste

Typical Usage Concentrations

1 - 20%

Natural Content

100%

HIGHEST BIXIN CONTENT ON THE MARKET FOR STRONGER COLOR

Cream to Powder Multi-use Powder



Formula CC-BE-22-14519-01

Shade: Annatto Orange

A lightweight creamy texture leaves a powder-like natural finish on the skin. Suitable for cheeks, eyes, and lips and ideal for creating a natural monochromatic look.

- 100% natural origin formula
- Water-free formula
- Clean and simple formulation with less than 10 ingredients
- Responsibly sourced colorant and effect pigments
- Versatile color for all skin tones
- Talc-free
- Vegan



Cream to Powder Multi-use Powder

CC-BE-22-14519-01

SunPURO® Natural Annatto O N70-5590 provides a rich orange-red color with only 2% loading. The color is elevated with a 5% loading of an interference gold effect pigment, creating a radiant effect on the skin.

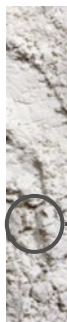
Mearlmica® FF

Viable talc alternative with a similar particle size and oil absorption. Sustainably and ethically sourced from Hartwell, GA, USA.

100%
USA
Mica

Timica® Gold 230FR

Interference gold effect pigment based on natural mica, delivering a subtle gold shimmer and enhancing the color of the annatto to create a radiant effect in the formula



| | Tradename | INCI | % | Function |
|---|---|--|-------|-------------------|
| A | LexFeel N100 MB [<i>Inolex</i>] | Diheptyl Succinate (and) Capryloyl Glycerin/Sebacic Acid Copolymer | 29.55 | Emollient |
| | Myrica Fruit Wax 6279L [<i>KahlWax</i>] | Myrica Cerifera (Bayberry) Fruit Wax | 10.94 | Emollient |
| | Lipex Shea [AAK] | Butyrospermum Parkii Butter | 16.42 | Emollient |
| | Vitapherole E-1000 Acetate Non Gmo [<i>VitaeNaturals</i>] | Tocopherol acetate | 1.09 | Antioxidant |
| B | SunPURO® Natural Annatto O N70-5590 | Helianthus Annuus (Sunflower) Seed Oil (and) Annatto (CI 75120) | 2.00 | Natural Colorant |
| C | Maisita 9040 [<i>Agrana</i>] | Zea Mays (corn) Starch | 15.00 | Texturizing agent |
| | Mearlmica® FF | Mica | 20.00 | Filler |
| | Timica® Gold 230FR | Mica, Titanium Dioxide (CI 77891) | 5.00 | Effect Pigment |

Procedure:

1. Weight all ingredients of phase A and heat until completely melted (around 60°C) 2. Add phase B while mixing 3. Remove from heat; add phase C while hand mixing until completely homogeneous 4. Poor into appropriate packaging

Natural Annatto Dispersion



INCI

Water (and) Annatto (CI 75120) (and) Potassium Hydroxide

Extraction

Norbixin powder extracted using water, then dispersed and stabilized. Norbixin content 2.25-2.60%

Regulatory

Globally approved as a cosmetic colorant

Stability

Stable in all tested conditions; Incompatible with ethyl acetate

COSMOS

Certiﬁable ingredient

ISO 16128-2

Natural Origin

97%

Product Form

Orange-red liquid

pH Level (Product)

10 – 12

Typical Usage Concentrations

0.1 – 5%

Natural Content

97%

UNIQUE AQUEOUS PREPARATION WITH THE HIGHEST NORBIXIN CONTENT ON THE MARKET, FOR EASY FORMULATION AND STRONG COLOR

Milky Makeup Remover



Formula SC-BE-22-14519-01

Shade: Honey

A honey inspired makeup remover which transitions from a gel-like texture to a creamy milky froth when mixed with water. A natural cleanser that leaves skin feeling soothed, cleaned, and refreshed.

- 100% natural origin formula
- Water-less formula
- Clean and simple formulation with less than 10 ingredients
- Responsibly sourced colorants
- Sephora Clean
- Vegan



Milky Makeup Remover

SC-BE-22-14519-01

SunPURO® Natural Annatto A N70-5440 creates the strong honey-like color. Adding a natural colorant to a cleansing application serves to enhance the connection to scents, reinforce natural origin, and differentiate from other cleansers on the shelf.

| | Tradename | INCI | % | Function |
|---|---|--|-------|------------------|
| | Glycerin | Glycerin | 58.50 | Humectant |
| A | SunPURO® Natural Annatto A N70-5440 | Water (and) Annatto (CI 75120) (and) Potassium Hydroxide | 0.20 | Natural Colorant |
| | Sistema SP70-C [<i>Sistema</i>] | Sucrose Stearate | 2.00 | Emulsifier |
| B | Sesame Oil [<i>IMCD</i>] | Sesamum Indicum (Sesame) Seed Oil | 19.00 | Emollient |
| | Witarix MCT 60/40 coconut based [<i>IOI Oléo</i>] | Caprylic/Capric Triglyceride | 19.00 | Emollient |
| C | Vitapherole E-1000 Acetate Non Gmo [<i>VitaeNaturals</i>] | Tocopherol acetate | 1.00 | Antioxidant |
| | Fragrance | - | 0.30 | - |

Procedure:

1. Mix Phase A and heat to 70°C 2. Mix Phase B and heat to 75° C 3. Add Phase B to A very slowly while homogenizing 4. Cool down to 40°C and add phase C. Homogenize shortly

Natural Annatto Formulation Tips & Tricks



SunPURO® Natural Annatto O N70-5590

- Will act like an oily pigment dispersion
- Orange-red color at low concentrations / Red with a yellow undertone at higher concentrations
- Blend and disperse in the oily phase
 - If W/O process, blend at the end of the emulsion process at room temperature
 - If O/W process, blend into the oily phase right before making the emulsion (or if possible, in a cold process), avoid long high temperature exposure



SunPURO® Natural Annatto A N70-5440

- Will act like a dye; shade will depend on the concentration
- Can stain on skin at a high percentage
- More suitable for basic to neutral pH formulas
- Blend in aqueous phase
- Avoid high temperature exposure (above 70°C) for long periods of time
- Adding SunPURO® Natural Annatto A N70-5440 will not affect the pH of the final cosmetic formulation if used at typical usage levels

Natural Chlorophyll Products



About Chlorophyll

Chlorophyll is rich in vitamins:
A, C, E, and K

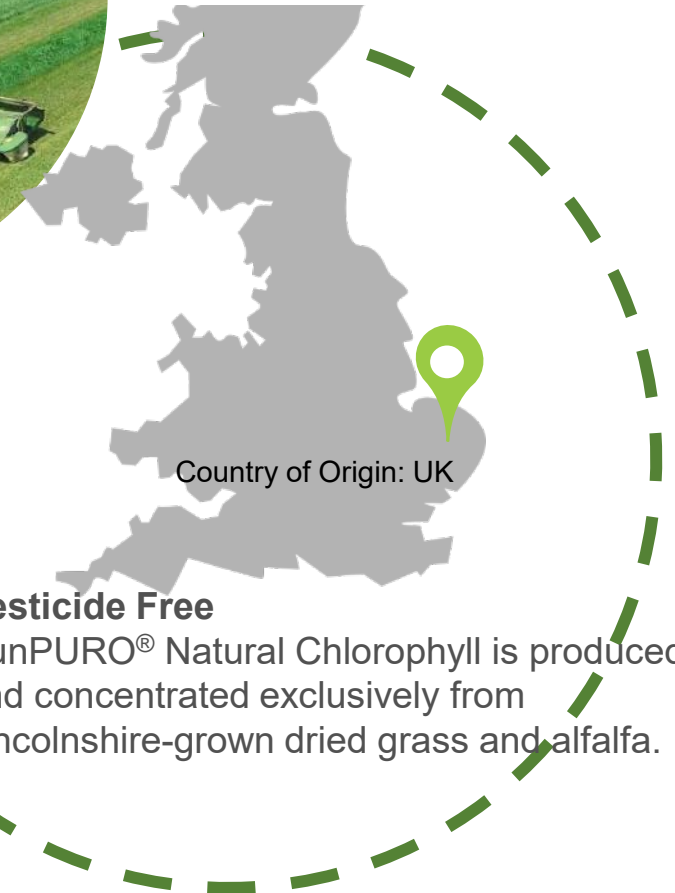
Chlorophyll on the skin is known to help with radiance and a youthful glow

Rich in antioxidants and vitamins, Chlorophyll offers cleansing properties and brings freshness to the skin and mouth.



Traceable Batches

Natural Chlorophyll products can be traced back to the field in the UK.



Country of Origin: UK

Pesticide Free

SunPURO® Natural Chlorophyll is produced and concentrated exclusively from Lincolnshire-grown dried grass and alfalfa.

Natural Chlorophyll Powder



INCI

Maltodextrin (and) Chlorophyllin-copper complex (CI 75810)

Extraction

Leaf from fescues grass, extraction obtained from Sodium Copper Chlorophyll

Regulatory

Approved cosmetic colorant; USA only allowed in oral care; max Chlorophyll-Copper Complex is 0.1%

Stability

Stable in all tested conditions.

Product Form

Green powder

ISO 16128-2

Natural Origin

100%

pH Level (Product)

9 - 11

Typical Usage Concentrations

0.1 – 5%

Natural Content

85%

RESPONSIBLY SOURCED FROM THE UK

Natural Teeth Cleansing Solid



Formula OC-BE-22-14519-01

Shade: Green Mint

Replace the paste with a unique teeth cleaning formulation in a solid, powder form. Easy to use, simply wet the toothbrush, dip, and brush, turning into a paste as you brush. Leaving your smile white and your mouth feeling clean!

- 100% natural origin formula
- Water-free formula
- Clean and simple formulation with less than 10 ingredients
- Responsibly sourced colorants
- Globally compliant
- Vegan



Natural Teeth Cleansing Solid

OC-BE-22-14519-01

Based on the percent of chlorophyllin-copper complex in **SunPURO® Natural Chlorophyll P N61-6625**, use up to 0.8% in application to deliver a rich green color.

| | Tradename | INCI | % | Function |
|---|--|--|-------|------------------|
| A | Sesame Oil [<i>IMCD</i>] | Sesamum Indicum (Sesame) Seed Oil | 25.05 | Emollient |
| | Stearic Acid | Stearic Acid | 12.00 | Emulsifier |
| | Pureact I-78P [<i>Innospec</i>] | Sodium Cocoyl Isethionate | 6.05 | Surfactant |
| | ImerCare 02K-S [<i>Imerys</i>] | Kaolin | 18.15 | Filler |
| | Calcium Carbonate | Calcium Carbonate | 32.25 | Abrasive agent |
| B | SunPURO® Natural Chlorophyll P N61-6625 | Maltodextrin (and) Chlorophyllin-copper complex (CI 75810) | 0.10 | Natural Colorant |
| | Glycerin | Glycerin | 4.45 | Humectant |
| C | Peppermint oil indian (piperita) [<i>Azelis</i>] | Mentha Piperita Oil | QS | Fragrance |

Procedure:

1. Premix phase B to obtain a fully solubilize product
2. Weight phase A and heat up to 75°C
3. Add phase A1 and mix while heating
4. Add phase B1 to B, hand mix
5. Remove phase A+A from heat, then quickly mix with a Rayneri phase B1+B to phase A+A1 (around 1500 RPM, adjust speed to avoid air bubbles)

Natural Chlorophyll Dispersion



INCI

Water (and) Polysorbate-80 (and) Chlorophyllin-copper complex (CI 75810) (and) Propylene Glycol (and) Potassium Hydroxide

Extraction

Leaf from fescues grass, extraction obtained from Sodium Copper Chlorophyll, then dispersed and stabilized in water

Regulatory

Approved cosmetic colorant; USA only allowed in oral care; max Chlorophyll-Copper Complex is 0.1%

Stability

Stable in all tested conditions. Incompatible with Ethyl Acetate

Product Form

Green liquid

ISO 16128-2

Natural Origin

55%

pH Level (Product)

9 - 11

Typical Usage Concentrations

0.1 – 5%

Natural Content

45%

**A UNIQUE DISPERSION FOR EASY FORMULATION
RESPONSIBLY SOURCED FROM THE UK**

Refreshing Mouth Drops



Formula OC-BE-22-14519-02

Shade: Green Mint

Use throughout the day for fresh breath and a refreshing feel or drop in water and use as a mouthwash. Adjust the concentration by adding drops.

- 100% natural origin formula
- Water-less formula
- Clean and simple formulation with less than 5 ingredients
- Responsibly sourced colorants
- Globally compliant
- Vegan



Refreshing Mouth Drops

OC-BE-22-14519-02

Based on the percent of chlorophyllin-copper complex in **SunPURO® Natural Chlorophyll A N61-6245**, use up to 1% in application to deliver a rich green color, ideal for complementing an energizing mint flavor.

| | Tradename | INCI | % | Function |
|---|--|---|-------|-------------------|
| | Glycerin | Glycerin | 99.25 | Humectant |
| A | Peppermint oil indian (piperita) [<i>Azelis</i>] | Mentha Piperita Oil | 0.50 | Active Ingredient |
| | SunPURO® Natural Chlorophyll A N61-6245 | Water (and) Polysorbate-80 (and) Chlorophyllin-copper complex (CI 75810) (and) Propylene Glycol (and) Potassium Hydroxide | 0.25 | Natural Colorant |

Procedure:

1. Mix all ingredients and put in appropriate packaging.

SunPURO® Natural Chlorophyll Formulation Tips & Tricks

SunPURO® Natural Chlorophyll P N61-6625

- Will act like a dye; shade will depend on the concentration
- Can stain on skin at a high percentage
- Blend in aqueous phase
- Avoid high temperature exposure (above 80°C) for long periods of time
- Pre-mixing in glycerin may take a few minutes (according to quantities and concentration)
- Adding SunPURO® Natural Chlorophyll P N61-6625 will not affect the pH of the final cosmetic formulation if used at typical usage levels

SunPURO® Natural Chlorophyll A N61-6245

- Will act like a dye; shade will depend on the concentration
- Can stain on skin at a high percentage
- Blend in aqueous phase according to suitable phase
- Avoid high temperature exposure (above 70°C) for long periods of time
- Adding SunPURO® Natural Chlorophyll A N61-6245 will not affect the pH of the final cosmetic formulation if used at typical usage levels



Natural Coconut Dispersion

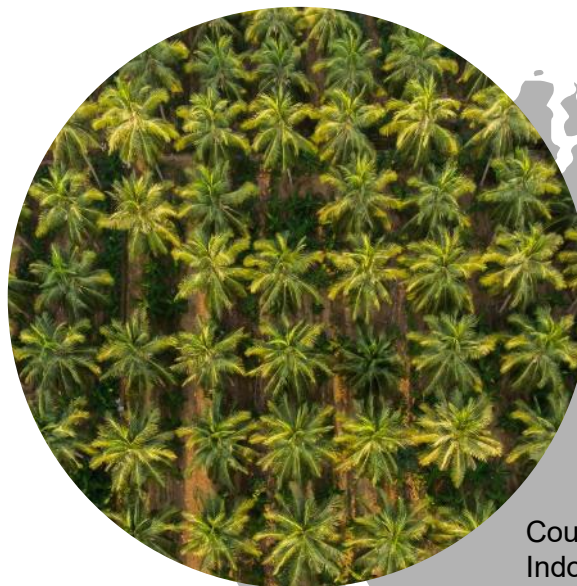


About Coconut

Mixed with Beta-Carotene, oils, starch, and glucose, to produce a milky opacifying agent ideal for personal care applications

A unique process to create a natural opacifying agent for aqueous cosmetic and personal care formulations

Most coconuts grow on plantations, it takes 12-15 years for the tree to mature.



Sustainable Coconut Charter

Supplier of coconut oil is a founding member of the charter which aims to improve traceability, farmer livelihood, and prevent deforestation.

Country of Origin:
Indonesia, Philippines, Papua
New Guinea, Ivory Coast,
Marshall Islands

Natural Opacifier

A milky white opacifier that can be used in personal care formulas without unnecessary fillers

Natural Coconut Dispersion



INCI

Water (and) Cocos Nucifera (Coconut) oil (and) Sodium Starch Octenylsuccinate (and) Sucrose (and) Citric Acid (and) Beta-carotene (and) Tocopherol (and) Potassium Sorbate

Regulatory

Approved colorant for EU/China/Japan. USA only allowed in skin/personal care.

Stability

High stability in aqueous systems; incompatible with oils and solvents; milky effect is lost in glycerin

Product Form

Milky viscous liquid

pH Level (Product)

2 - 4

COSMOS

Certifiable ingredient

Typical Usage Concentrations

10 – 50%

ISO 16128-2

Natural Origin

99.9%

Natural Content

84.9%

UNIQUE OPACIFIER WITH HIGH NATURALITY

Jelly Milk Face and Body Scrub



Formula SC-BE-22-14519-02

Milky gel face scrub hydrates, cleanses, and exfoliates the skin.

SunPURO® Natural Coconut A ACI-8220 helps to create a milky appearance without creating an emulsion or adding unnecessary fillers.

- 99.5% **natural origin** formula
- Clean and simple formulation with less than 10 ingredients
- COSMOS approved effect pigment
- Globally compliant
- Vegan



The application photo shows the same formula to showcase the milky effect created with the SunPURO® Natural Coconut A ACI-8220.

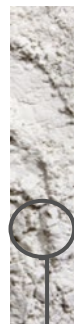
Jelly Milk Face and Body Scrub

SC-BE-22-14519-02

SunPURO® Natural Coconut A ACI-8220 creates a luxurious & nourishing appearance for this gel type formulation.

Reflecks™ Pinpoints of Pearl G130L

Shimmering interference effect pigment on borosilicate for supreme sparkle in a classic pearlescent color.



| Tradename | INCI | % | Function |
|---|--|------------|-------------------|
| Water, demin. | Aqua | QS | - |
| A Carbopol Ultrez 21 [<i>Lubrizol</i>] | Acrylates/C10-30 Alkyl Acrylate Crosspolymer | 0.84 | Rheology modifier |
| Sodium Hydroxide | Sodium Hydroxide | QS to pH 7 | - |
| B Geogard ECT [<i>Lonza</i>] | Benzyl Alcohol (and) Salicylic Acid (and) Glycerin | 1.00 | Preservative |
| Coconut Exfoliator 1000 [<i>Lessonia</i>] | Cocos Nucifera (Coconut) shell powder | 2.00 | Scrub agent |
| ● Reflecks™ Pinpoints of Pearl G130L | Calcium Sodium Borosilicate, Titanium Dioxide (CI 77891) | 0.50 | Effect Pigment |
| C Fragrance (Coconut) | Fragrance | 1.25 | Perfume |
| SunPURO® Natural Coconut A ACI-8220 | Water (and) Cocos Nucifera (Coconut) oil (and) Sodium Starch Octenylsuccinate (and) Sucrose (and) Citric Acid (and) Beta-carotene (and) Tocopherol (and) Potassium Sorbate | 10.00 | Natural opacifier |

Procedure:

1. Wet Carbopol Ultrez 21 into Water, wait until completely homogenous 2. Add Sodium Hydroxide to obtain a solid gel to pH = 7 3. Mix during 10 min 4. Add phase B and hand mix 5. Add phase C, slowly add ACI-8220 and hand mix to avoid air bubbles - pH adjustment (pH 7) may be required after by adding some Sodium Hydroxide again

Natural Coconut Formulation Tips & Tricks



Natural Coconut A ACI-8220

- Use in aqueous formulations (hair gel, shower gel, face serum, micellar water etc...)
- For intense opalescence, use at a higher concentration
- Glycerin will cancel the effect of the opalescence
- No coverage on skin
- It is important to note that the pH of the product may have a pH impact in the final cosmetic product if used at high levels of use (e.g. 10%)
- Adjust the pH at the end of the formulation

REGULATORY SUMMARY

| REGION | PRODUCT |  COLOR COSMETICS |  SKIN CARE |  PERSONAL CARE |  ORAL CARE |
|--------|-------------|---|---|---|---|
| EU | Annatto | ✓ | ✓ | ✓ | ✓ |
| | Chlorophyll | ✓ | ✓ | ✓ | ✓ |
| | Coconut | ✓ | ✓ | ✓ | ✓ |
| NA | Annatto | ✓ | ✓ | ✓ | ✓ |
| | Chlorophyll | | | | ✓ |
| | Coconut | | ✓ | ✓ | ✓ |
| China | Annatto | ✓ | ✓ | ✓ | ✓ |
| | Chlorophyll | ✓ | ✓ | ✓ | ✓ |
| | Coconut | ✓ | ✓ | ✓ | ✓ |
| Japan | Annatto | ✓ | ✓ | ✓ | ✓ |
| | Chlorophyll | ✓ | ✓ | ✓ | ✓ |
| | Coconut | ✓ | ✓ | ✓ | ✓ |

Contact Us

- **Visit our website**
- **Register for an account with Pigment Finder**
- **Subscribe to receive email newsletters**
- **Connect with us on LinkedIn**





Color & Comfort



SunChemical®

a member of the DIC group



Color & Comfort